

## Creating a Wildlife-Friendly Landscape



### The Woods in Your Backyard Workshop



## Messy is Okay!

- Natural areas will increase habitat
- New natural areas will attract wildlife that will increase wildlife-human conflicts (i.e. deer)



## What We'll Cover Today

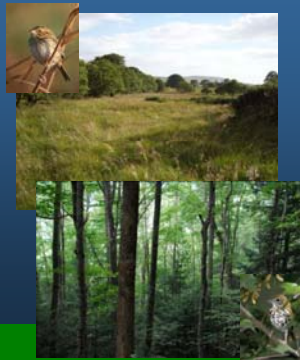
- Fundamentals of wildlife management
- Attracting wildlife to your property
- Planning your own wildlife enhancements
- Keeping wildlife safe



## Where to Start??

## The Basics - Understand Size Requirements

- Grassland and forest interior species need BIG habitat blocks (10s to 1000s of ac)
- Smaller properties can provide connectivity and buffering for interior species



## The Basics - Understand Size Requirements

- Woodland, edge and 'successional' species can use smaller, more diverse habitat blocks
- Migratory birds use any good habitat as 'stopover' habitat





## Attracting Wildlife – Think Connectivity

- Wildlife need connected habitats to safely disperse, breed, forage, maintain genetic diversity - survive
- Stream corridors are ideal
- Small properties can buffer larger blocks of habitat



## Attracting Wildlife - Create New Habitat

**Plant native trees** that are good for wildlife – think flowers, berries, fruits or nuts

- Dogwoods
- Hollies
- Spicebush
- Sumac
- Serviceberry (early spring berries for migrant birds!)
- Viburnums (deer resistant!)
- Oaks, Hickories, Walnuts
- Black Gum



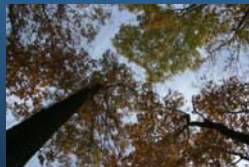
Build onto existing forest and stream corridors



## Attracting Wildlife Mast Trees



▷Oak, hickory, walnut, beech



▷Cherry, crabapple, hackberry,



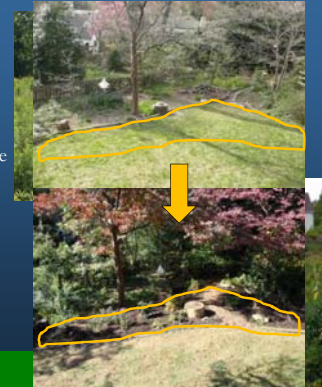
## Attracting Wildlife - Create New Habitat

Encourage Natural Tree Recruitment

- Park the mower
- Allow new trees to come up in natural areas

Convert Lawn to Natural Cover

- Even small areas can attract lots of wildlife



## Attracting Wildlife - Create New Habitat

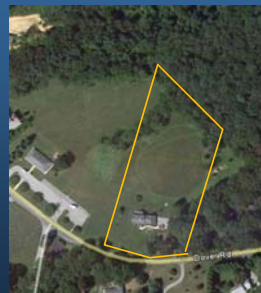
Create Habitat Islands

- Adds diversity of niches
- Provides escape cover



## Attracting Wildlife

Variety of options exist for lawn or field conversion.



## Attracting Wildlife - Field Borders

- 50'-100' border strips provide cover & food
  - Between normal crop production or lawn and forest
  - Create on forest side or field side
  - Little reduction in productivity
  - Can easily be returned to production

a.

b.

■ Row crops

■ Field border

## Attracting Wildlife – Mast Trees

▷Oak, hickory, walnut, beech

▷Cherry, crabapple, hackberry,

## Attracting Wildlife – Habitat Features

### Wildlife Love Dead Wood!

Standing Snag

Dead Branches

Den Tree

Deadfall

## Keep or Create Snags

- Most woodlots have them – keep them around
- Can create snags if they are under-represented:
  - Mechanical girdling –at least 1/2" groove for small trees, 1-1.5" groove for larger trees; or
  - Herbicides

## Applying Herbicides

Cut Stump

Hack 'n Squirt

50% mixture of roundup, garlon, 2,4, D. Use a good ax

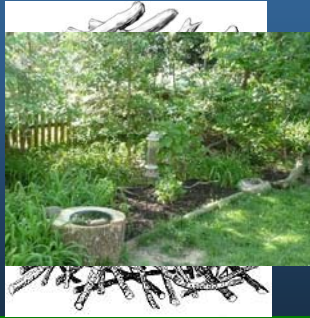
## Attracting Wildlife – Habitat Elements

### Brush Piles

- Cover
- Nest Sites
- Loafing

## Building a Brush Pile

- Base - logs, rocks, fence posts – anything you have around
- 6" openings
- Top - finer brush and branches
- Near water and other habitat features



## Managing & Creating Edge



## Attracting Wildlife – Habitat Features

**Water is a Huge Draw – especially running water**



## Attracting Wildlife – Habitat Elements

**Create dense thickets**

- Allow brush to develop in understory
- Only mow those areas that you need



## Attracting Wildlife - Pollinator Habitat

Pollinators Need:

- A diversity of native plants that flower all season
- A place to nest and lay eggs nearby

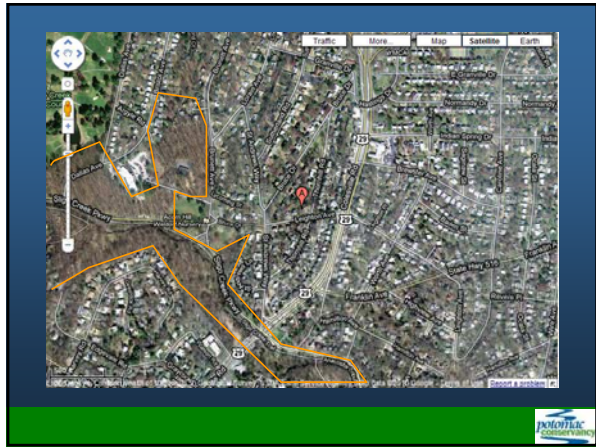
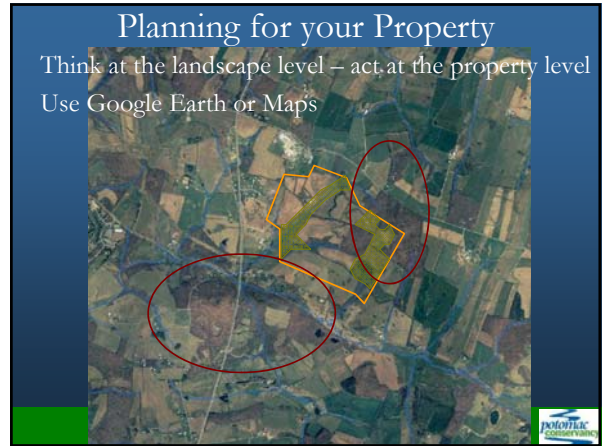
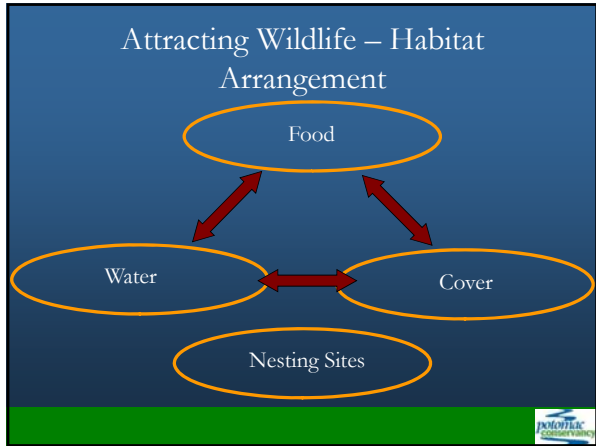


## Pollinator Nest Types



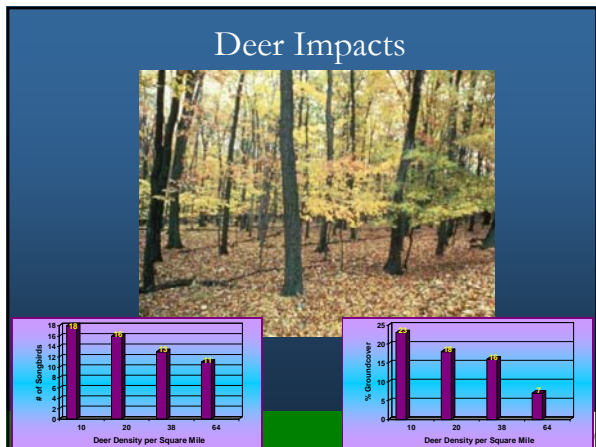
70% of native bees nest in the ground  
– 30% nest in wood





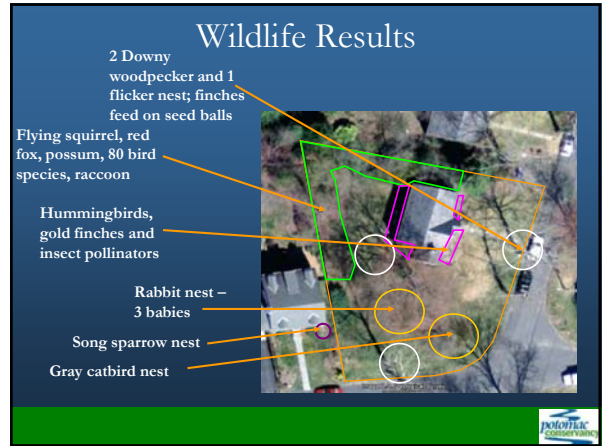
### What should you Manage for?

- Landscape perspective + your own interests will help you determine what types of wildlife to manage for
- Easier to manage for good habitat than individual species
- Cannot manage for everything
- Avoid attracting deer!



### Assess your Habitat Potential – Raw Materials

- Overgrown habitat islands
- Large invaded area of mixed vegetation
- Potential pollinator gardens
- Snags



## Keeping Wildlife Safe

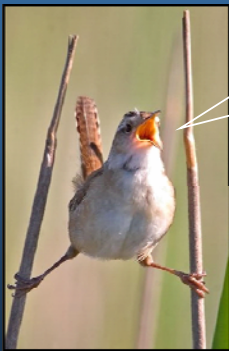
- Mow open habitats outside of the breeding/flowering season –April-August
- Mow only a portion each year or every 2-4 years to maintain habitat ‘patchiness’ and diversity



## Words to Guide Your Choices

“A thing is right when it tends to preserve the integrity, stability and beauty of the biotic community. It is wrong when it tends otherwise.”

-- Aldo Leopold



Questions?

