

# Activity 6

## Printing from Terrain Navigator

### Set up the Map

The area of map in the active window will be what is printed, so be sure that it is centered as you want the printed map to come out.

**To center the map:** Select the Center Tool which looks like a circle with crosshairs. Click on the area of the map that you want to be the center and the map will shift to center itself.

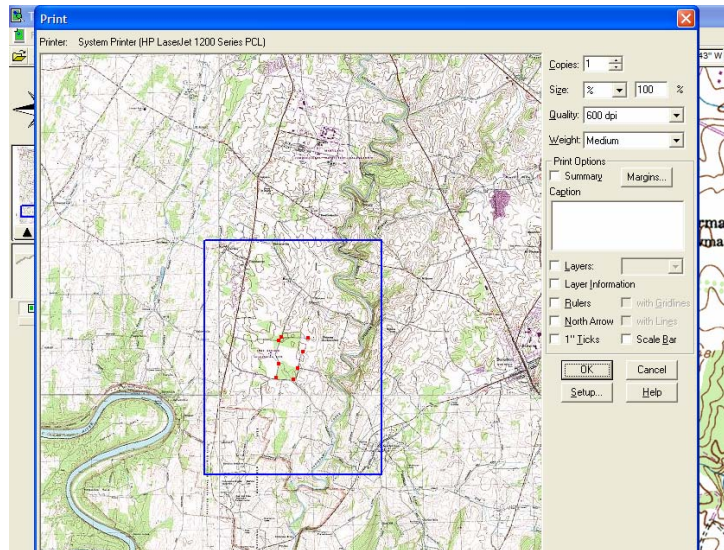
### Printing

#### **Quick Print**

By selecting File > Quick Print, the current map will print on your default printer. Everything you see on the map on your screen will be printed, including routes and waypoints, but the layer information (lat/long coordinates, route distances, etc.) will not be printed.

#### **Advanced Printing**

To set up printing options: Click on the Print icon in the toolbar or click on File > Print... A print window will appear showing the whole USGS map if you are in single map view, or portions of more than one map if you are in seamless view. A blue box outlines the area that will be printed. By clicking and dragging the blue box, you can change the area that will be printed.



**To change the scale of the printed map:** The area covered by the printed map (Size) can be changed using percentage or scale.

Percentage is the default, and can be changed by clicking in the number box next to Size and typing in your desired value. The higher the percentage, the smaller the blue box, and the printed map will be more zoomed in; 100% corresponds to a 1:1 zoom level (map will cover a smaller area), and 50% for 1:2 level (more zoomed out).

When size is determined by scale, a 1:2400 map will cover a larger area (more zoomed out) than a 1:4800 map.

**Quality of the print** can be set to 600 or 300 dpi (dots per inch). The higher dpi will produce a better quality printout as long as your printer is capable of printing at that setting.

**The Weight** setting determines the amount of ink that is used in the print, resulting in a lighter or darker map.

## **Print Options**

In the Print Option box, you can choose to include information that will be printed below the map in a box. By default, the name of the USGS map, the current date, the map's scale, and the lat/long coordinate appear below your printed map. If you want to include other information such as your name or information about the mapped location, type this in the Caption box. Check the Summary box to include your caption on the printed map.

**Layers** include the markers and routes on your map. **Layer information** prints as text separate from the map. The information includes details about routes and waypoints such as distance, area, and coordinates. Do not choose this option unless you really want this data since it will produce many pages of output.

**Rulers** can be included with or without gridlines. A **north arrow** can be included with or without lines. **1-inch ticks** and a **scale bar** are also options.

In Setup, you can choose whether you want your map printed in portrait or landscape (horizontal) orientation. Changing this option will change the orientation of the blue box outlining the printing area.

