

Activity 5

File Management

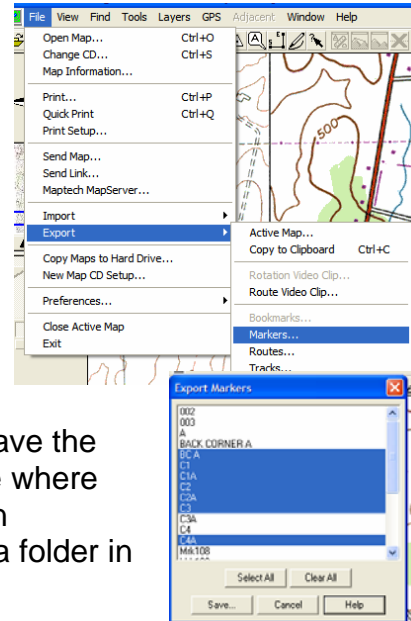
Once you have accumulated a lot of GPS data, it is important to save data in separate files to keep things organized. As soon as you transfer data from your GPS unit, save that data in a new folder. Once you have made any changes to that data set, save under a new name, such as Smith Property edit1. That way if you make a mistake, you will not lose your original data.

Saving GPS Data

In **Terrain Navigator**, to save data, click File > Export and select Markers Routes or Tracks. A window will appear with the data available for saving.

To highlight a block of data, hold Shift while clicking on the first and last items to be included. To select several items, hold down Ctrl and click the items you want to save.

Click Save... and create a new folder in which to save the items. Give the folder a descriptive name, and note where the folder is (default is C: > Program Files > Terrain Navigator > your folder. It is usually best to create a folder in you're MyDocuments folder.



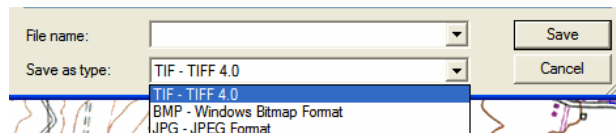
USAPhotoMaps automatically saves any waypoints that are created in or sent to the program from a GPS unit. Routes are saved as .txt files.

EasyGPS is a program you can use to easily save and alter GPS information. This program can only use .loc and .gpx files.

GPS Utility is a good program for saving GPS data if you need to use a particular file type. For example, ArcView uses shape files, which is one of the many file types GPS Utility can handle.

Saving Maps

Maps from **Terrain Navigator** can be saved as .tif, .bmp, or .jpg files. (JPGs require a smaller file size, so take up less memory.) Select File > Export > Active Map... To change the file type, click on the dropdown box next to Save as type.



You can also copy maps to paste into other programs by clicking File> Export > Copy to Clipboard. This copies just the map part of the screen. The image can then be pasted in another program like Word or Photoshop. You can print or alter

the map as that program allows. (You will not be able alter layers like marker locations within the image file.)

If you want to include other items from the screen, press Print Screen, then paste into another program. This will include everything you see on your monitor screen.

Emailing Maps

To email a link to view your current map, select, File > Send Link. You will be prompted to choose an email address from your default email program (such as Outlook). Once you enter the email address(es) and click Send, the recipient will receive an email from MapTech with a link to a website where they can view the map you were viewing. This map will not include any layers (such as waypoints or routes).

To email an image file, select File > Send Map. Your default email program will open with the .jpg of your current map attached. The image file will include layers such as waypoints and routes.